



RYDE LOCAL GOVERNMENT AREA HEALTH PROFILE

Ryde Local Government Area (LGA) is one of 9 LGAs in the Sydney North Primary Health Network (SNPHN) region.

Key Areas: Pockets of socio-economic disadvantage, large culturally and linguistically diverse population (CALD), bowel and cervical cancer screening rates and childhood immunisation rates.

HEALTH DRIVERS

Ryde LGA is an affluent area, ranking in the least disadvantaged quintile (20%) on the index of relative socio-economic disadvantage. There is an area of comparatively high disadvantage in the suburbs of Eastwood, Gladesville, Marsfield, Macquarie Park, Putney and West Ryde.



2.3% of people aged 16-64 years receive unemployment benefits
SNPHN: 1.7%; NSW: 5.2%



51% of people aged 17 years participating in tertiary education
SNPHN: 46.1%; NSW: 29.9%



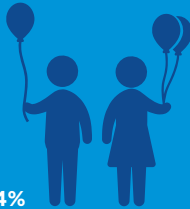
38.1% of low-income families experience financial stress from mortgage or rent
SNPHN: 33.6%; NSW: 32.9%

VULNERABLE GROUPS

Children

11.2%
(2,180)

of children in low-income, welfare-recipient families
SNPHN: 7.2%; NSW: 24%



Older People

14.2% (16,652)

of the total population aged 65+ years
SNPHN: 15.5%; NSW: 15.7%

Between 2016-2031, there will be an increase of **51.4%** in the 65+ years population
SNPHN: 43.3%; NSW: 50.3%



Disability

4.4% of the population have severe or profound disability
SNPHN: 3.4%; NSW: 4.9%



HEALTH RISK FACTORS



Obesity

18.9 per 100
(18+ years) obese
SNPHN: 17.7; NSW: 26.4



Alcohol

Alcohol attributable hospitalisations **10.5% higher** than the NSW rate.
781 per 100,000



Smoking

10.6 per 100
(18+ years) current smokers
SNPHN: 10.2; NSW: 16.2

CHILDHOOD IMMUNISATION

IMMUNISATION RATES LOWER THAN THE NATIONAL ASPIRATIONAL TARGET OF 95%



1-year-old

90%
fully immunised
SNPHN: 90%
NSW: 90.1%



2-years-old

89.6%
fully immunised
SNPHN: 89%
NSW: 90.7%



5-years-old

91.2%
fully immunised
SNPHN: 90%
NSW: 92.5%

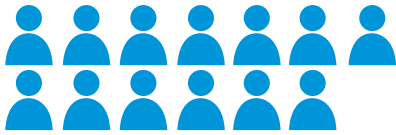
CANCER SCREENING

Bowel cancer screening participation rates among people aged **50-74 years in Ryde (35.2%)** lower than the SNPHN rate (37.1%) and similar to the NSW rate (35.1%).

Cervical cancer screening participation rates among women aged **20-69 years (53.5%)** lower than both SNPHN (62.7%) and NSW (56%) rates.

Breast cancer screening participation rates among women aged **50-69 years (52.3%)** similar to both SNPHN (52.5%) and NSW (51.6%) rates.

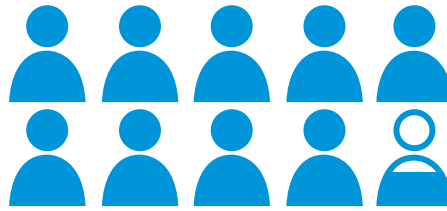
MENTAL HEALTH



13 per 100

(15+ years) report mental and behavioural problems

SNPHN: 12.1; NSW: 13.1



9.3 per 100

(18+ years) report high or very high psychological distress

SNPHN: 8.5; NSW: 10.5

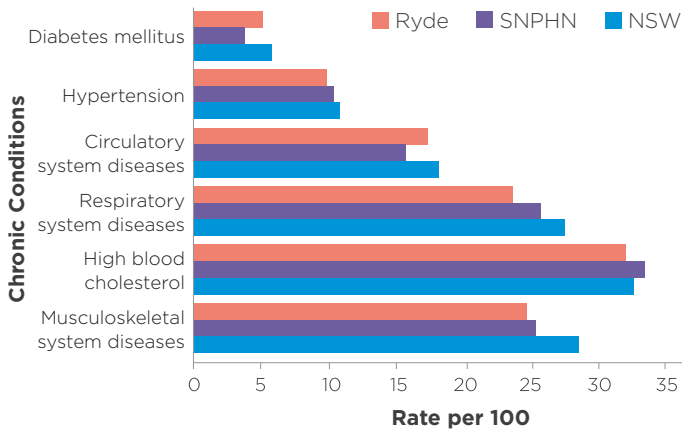


6,019 per 100,000

with a Mental Health Treatment Plan created by a GP

SNPHN: 6,271; NSW: 8,222

CHRONIC CONDITIONS



POTENTIALLY PREVENTABLE HOSPITALISATIONS



1,600 per 100,000

NSW: 2,086 per 100,000

PRIMARY HEALTHCARE



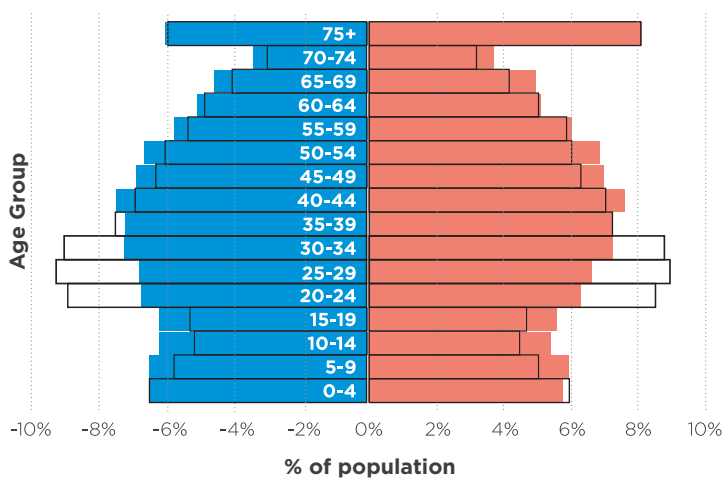
49 GP practices in the Ryde region

142 GPs per 100,000 people

SNPHN: 128 per 100,000 people; NSW: 118 per 100,000 people

DEMOGRAPHY

Age structure comparison by sex for Ryde and SNPHN



□ Ryde males ■ SNPHN males □ Ryde females ■ SNPHN females

Total population 117,171. Between 2016-2031, the total population will increase by 30.3% to 152,950
SNPHN: 20.3%; NSW: 19.7%

Area: 40.5 km²

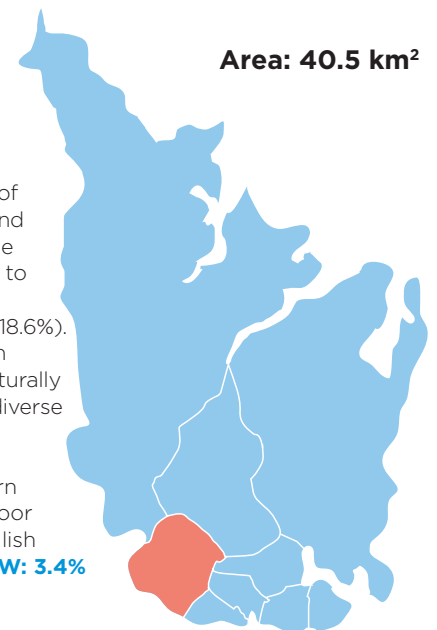
CALD

Ryde LGA has a higher proportion of people culturally and linguistically diverse (36.5%) compared to the SNPHN region (22.1%) and NSW (18.6%). Chinese and South Korean largest culturally and linguistically diverse groups.

6.1% of people born overseas report poor proficiency in English
SNPHN: 2.8%; NSW: 3.4%

Aboriginal

0.4% (457) of the population identify as Aboriginal and Torres Strait Islander
SNPHN: 0.4%; NSW: 3%



Sources

- Australian Bureau of Statistics (ABS) 2011-15, ABS, Canberra, viewed August 2016, www.abs.gov.au.
- Australian Government -Department of Health 2016, Immunisation Coverage Data, Department of Health, Canberra, viewed 17 August 2016, www.immunise.health.gov.au.
- Australian Government-Department of Health 2015, Health Workforce- Online Data Tool, Department of Health, Canberra, viewed 16 August 2016, www.data.hwa.gov.au.
- Cancer Institute NSW 2016, Reporting for Better Cancer Outcomes Performance Report 2016: Northern Sydney Local Health District, Cancer Institute NSW, Sydney.
- Centre for Epidemiology and Evidence 2016, Health Statistics New South Wales, NSW Ministry of Health, Sydney, viewed 25 July 2016, www.healthstats.nsw.gov.au.
- NSW: Department of Planning & Environment 2016, New South Wales State and Local Government Area Population, Household and Dwelling: 2014 Final, NSW Planning Department of Planning & Environment, Sydney, viewed June 2016, www.planning.nsw.gov.au.
- Public Health Information Development Unit (PHIDU) 2016, Social Health Atlas of Australia May 2016 Release 2, PHIDU, Adelaide, viewed 21 July 2016, www.phidu.torrens.edu.au.